

EQUIPMENT FOR STORAGE AND FORKLIFTS

Catalog 2024

Variantico Group Sp. z o.o.

Swieradowska Str. 47
02-662 Warsaw
Poland

Work platform VWP

VWP 150

- Durable construction made of steel tubes
- Suitable for one person
- Steel mesh platform base
- Supplied with a safety chain
- Equipped with a toolbox
- Surface treatment: powder coating in RAL colors, or alternatively hot-dip galvanized (HDG)
- Optional wheels available on request



Name	Weight, kg	Dimensions, mm	Load capacity, kg
VWP150	61	830x800x1910	150
VWP300	110	1315x910x1960	300



VWP 300

- Durable construction made of steel tubes
- Suitable for 2 people
- Steel mesh platform base
- Forklift sleeves equipped with a safety locking mechanism
- Equipped with a toolbox
- Surface treatment: powder coating in RAL colors, alternatively HDG
- Optional wheels available on request

*Includes a safety kit for installation

Work platform VWP

VWP 350

- Durable construction made of steel tubes
- Suitable for 2 people
- Steel mesh platform base
- Sleeves for forklifts equipped with a safety locking mechanism
- Can be used from both the wide and narrow side
- Equipped with two covers for the wide and narrow side
- Equipped with a toolbox
- Surface treatment: powder coating in RAL colors, alternatively HDG
- Supplied with a safety chain
- Optional wheels available on request



Name	Weight, kg	Dimensions, mm	Load capacity, kg
VWP350	129	1315x960x1990	300
VWP400	121	1350x1150x2040	450



VWP 400

- Durable construction made of steel tubes
- Suitable for 2 people
- Steel mesh platform base
- Sleeves for forklifts equipped with a safety locking mechanism
- Equipped with a toolbox
- Surface treatment: powder coating in RAL colors, alternatively HDG

*Includes a safety kit for installation

Forklift Extensions (Open and Closed)

- **Durable steel construction**
- **Available in open and closed versions**
- **Equipped with safety screws**
- **Surface treatment: powder coating in RAL colors, alternatively HDG**



Available in lengths:

- 1400 mm
- 1500 mm
- 1600 mm
- 1800 mm
- 2000 mm
- 2200 mm
- 2400 mm

Available in dimensions:

- | | |
|-------------|-------------|
| • 80x40 mm | • 125x50 mm |
| • 100x40 mm | • 130x50 mm |
| • 100x45 mm | • 130x60 mm |
| • 100x50 mm | • 140x50 mm |
| • 120x40 mm | • 150x50 mm |
| • 120x50 mm | • 150x70 mm |
| • 125x45 mm | • 160x80 mm |

Lifting traverses

- **Durable steel construction**
- **Designed for use with forklifts**
- **Models VVH and VVT are equipped with a safety screw**
- **Equipped with a lifting hook**
- **Surface treatment: powder coating in RAL colors, alternatively HDG**



Name	Weight, kg	Dimensions, mm	Load capacity, kg
VVH	13	300x212x192	1000
VVT	30	800x300x180	2000
VLA-15	49	1500x635x220	250-1000
VLA-24	59	2400x635x220	100-1000
VLA-30	197	3000x558x307	2000-6000

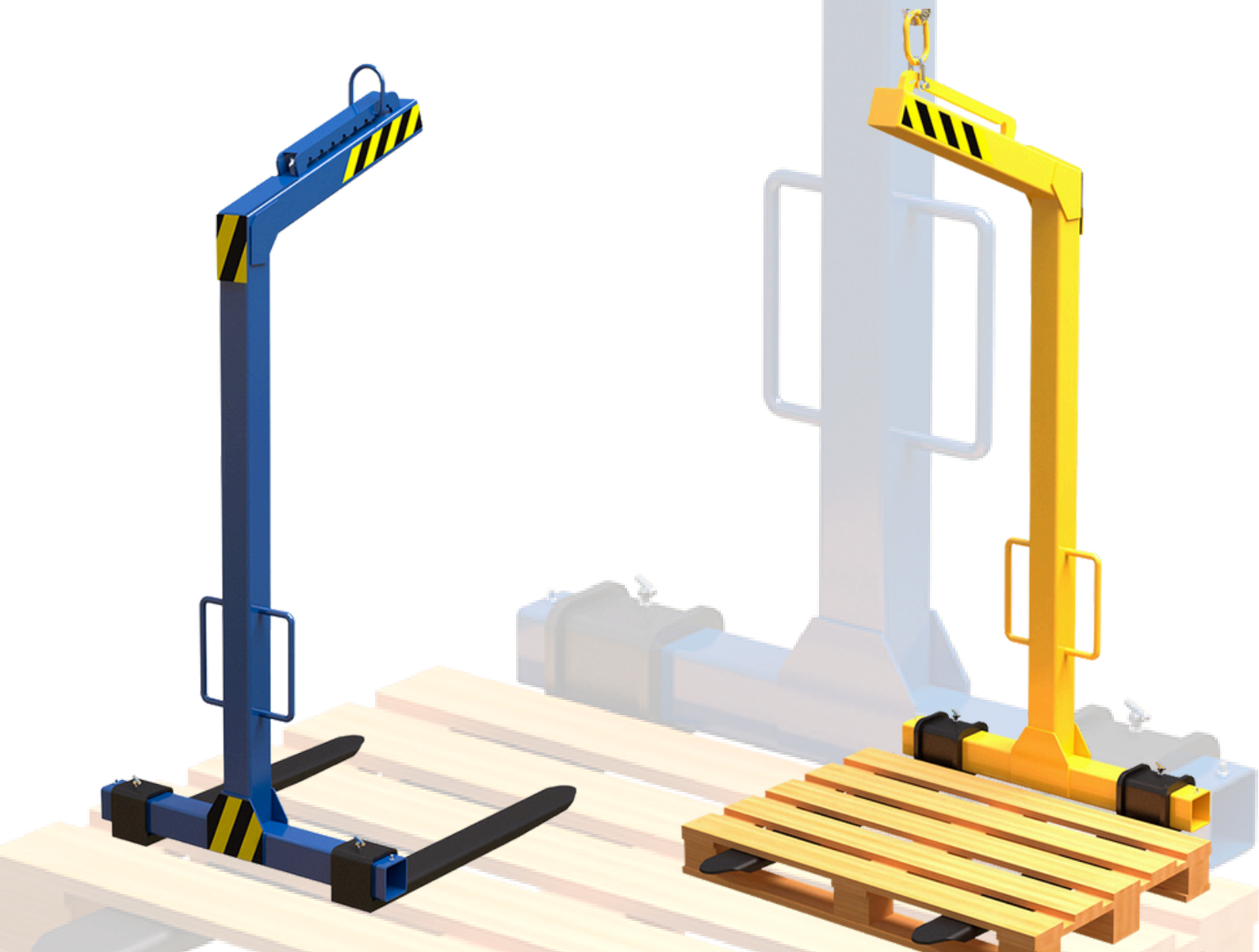


*With hook included

Forklift Pallet Grab VPH

- **Steel tube construction**
- **Suitable for use with cranes for lifting and moving any pallets with loads**
- **Surface treatment: powder coating in RAL colors, alternatively HDG**

Name	Weight, kg	Dimensions, mm	Load capacity, kg	Length, mm
VPH-1	105	1115x1015x2124	1800	990
VPH-2	113	1351x945x1803	1800	1200



Load support

- **Steel tube construction**
- **Designed for use with cranes**
- **Equipped with a safety chain**
- **Surface treatment: powder coating in RAL colors, alternatively HDG**



Name	Weight, kg	Dimensions, mm	Load capacity, kg
VDORN	142	3000x558x192	1000



*Includes a safety kit for installation

Transport Trolley

- **Durable construction made of steel tubes and profiles**
- **Load capacity up to 500 kg**
- **Ends and sides made of 4 mm wire mesh**
- **Surface treatment: powder coating in RAL colors**
- **Optional wheels available on request**



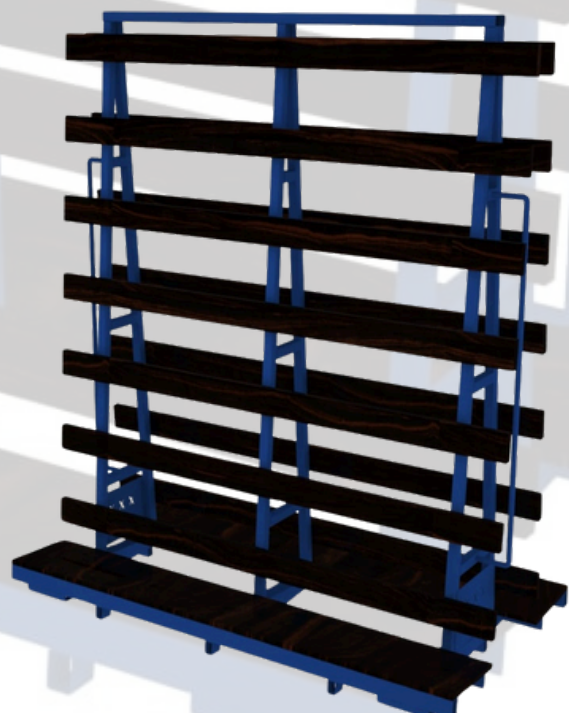
Name	Article	Weight, kg	Dimensions, mm
Open 1-sided	VT-194-00	24	1200x600x960
Open 1-sided	VT-195-00	20	900x600x960
Open 2-sided	VT-194-02	27	1200x600x960
Open 2-sided	VT-195-02	24	900x600x960



Trolley for Boards, Sheets, and Panels VGPC

- Durable construction made of steel tubes and profiles
- Load capacity up to 1000 kg
- Loading possible from both sides, evenly left-right
- Equipped with plywood coated with a 15 or 18 mm film
- Surface treatment: powder coating in RAL colors
- Optional wheels available on request

Name	Weight, kg	Dimensions, mm	Load Plate Dimensions
VGPC-1	99	2000x1090x1400	395
VGPC-2	77	1500x785x1730	240
VGPC-3	84	1500x1090x1730	395



Pallet Transport Trolley

VPD

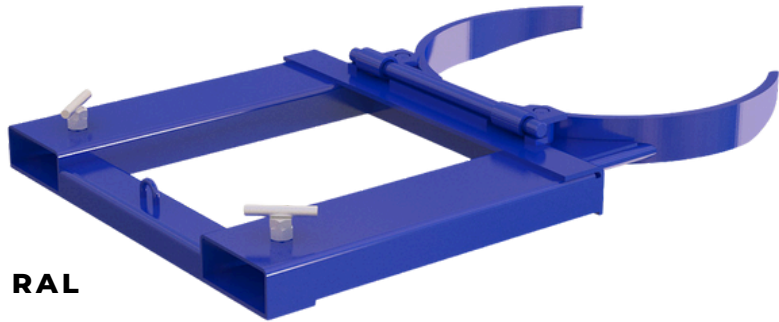
- **Durable tubular and profile steel construction**
- **Equipped with four secure stacking corner brackets**
- **Suitable for Euro pallets 1200x800 mm**
- **Load capacity up to 1000 kg**
- **Surface treatment: powder coating in RAL colors, alternatively HDG**
- **Optional wheels available on request**

Name	Weight, kg	Dimensions, mm
VPD	25	1238x838x76



Barrel Handle VBHF

- Durable steel construction
- Designed for use with forklifts
- Foldable design
- Suitable for 1 barrel
- Equipped with a safety screw
- Surface treatment: powder coating in RAL colors, alternatively HDG



Name	Weight, kg	Dimensions, mm
VBHF	50	1116x710x120



Snow Plow VSP

- **Durable steel construction**
- **Designed for use with forklifts**
- **Adjustable front blade - right and left**
- **Forklift sleeves equipped with a safety locking mechanism**
- **Equipped with a 40 mm rubber front blade**
- **Surface treatment: powder coating in RAL colors**
- **Optional hydraulic gas supply to be added later**

Name	Weight, kg	Dimensions, mm
VSP-1 Hydraulic	192	1712x1512x679
VSP-1	172	1712x1512x679
VSP-2	85	1712x1512x400
VSP-4	149	1712x2512x679



Steel Manurack

- **Durable steel tube/profile construction**
- **4 tubes included in the set**
- **Easy assembly/disassembly**
- **Load capacity up to 1500 kg**
- **Suitable for transport with a forklift**
- **Stackable - space-saving!**
- **Surface treatment: powder coating in RAL colors, alternatively HDG**

Name	Weight, kg	Dimensions, mm	Load capacity, kg
VMSR-1	64	1985x1235x1110	1500
VMSR-2	59	1550x1185x1110	1500
VMSR-3	63	2020x1185x1110	1500



Mesh Container

- **Solid construction reinforced with steel**
- **The mesh can be easily removed**
- **Extension tubes can be folded under the container**
- **Convenient and compact storage**
- **Surface treatment: powder coating in RAL colors, alternatively HDG**

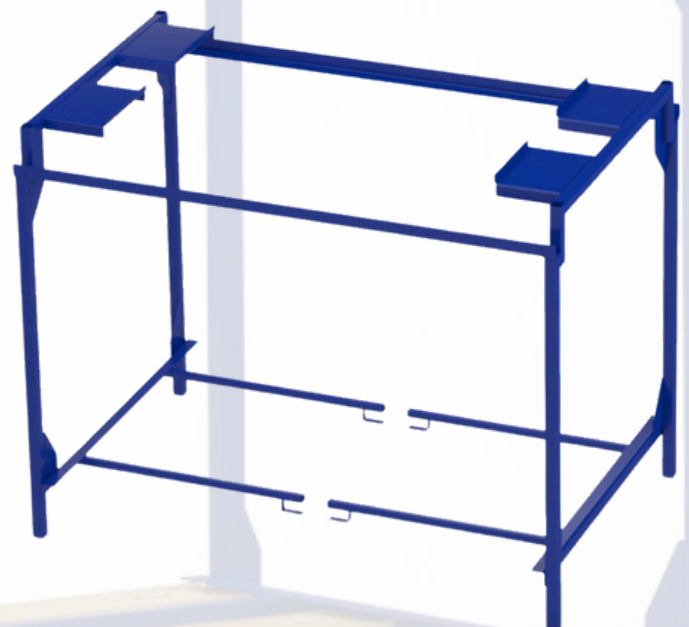
Name	Weight, kg	Dimensions, mm
VK1	54	1200x800x900
VS1	65,5	970x970x920



Wooden Pallet Stand

- Increased capacity by 100%
- Rigid tube construction
- Load capacity 500 kg
- Stackable in two levels
- Quick assembly/disassembly
- Surface treatment: powder coating in RAL colors, alternatively HDG

Name	Weight, kg	Dimensions, mm	Load capacity, kg
VSRWP	23	1266x800x997	500



Closed Metal Container

- **Top-opening lid**
- **Solid construction reinforced with steel**
- **Designed for storing construction tools**
- **Equipped with a lock and handle for opening**
- **Wheels can be added - optional**
- **Lifting grips for crane handling**
- **Surface treatment: powder coating in RAL colors**

Name	Weight, kg	Dimensions, mm
VSCC-1	96	1000x1012x844
VSCC-2	158	2000x1012x844



Metal Container

VSC

- Reinforced steel construction with reinforcements
- Convenient storage
- Suitable for transport with a forklift
- Stackable - space-saving!
- Surface treatment: powder coating in RAL colors, alternatively HDG or hot-dip galvanized



Name	Weight, kg	Dimensions, mm	Load capacity, kg	Capacity, L
VSC	71	1200x800x928	800	750
VRIF-400	60	800x600x920	1200	400
VRIF-800	101	1200x800x920	1200	800
VRIF-1600	145	1600x1200x920	1200	1600

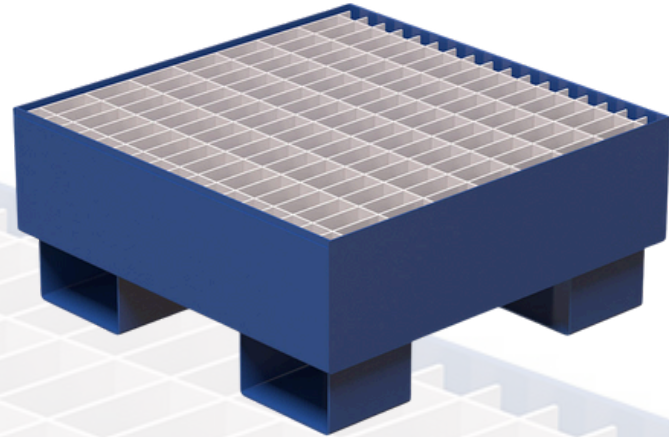
VRIF

- Internal capacity of 400, 800, 1600 liters
- Reinforced steel construction with reinforcements
- Convenient storage
- Surface treatment: powder coating in RAL colors
- Increased load capacity

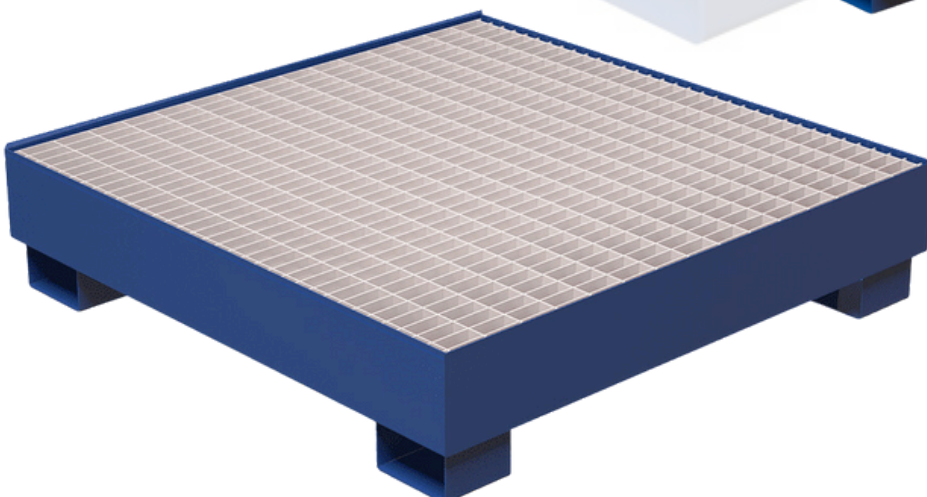
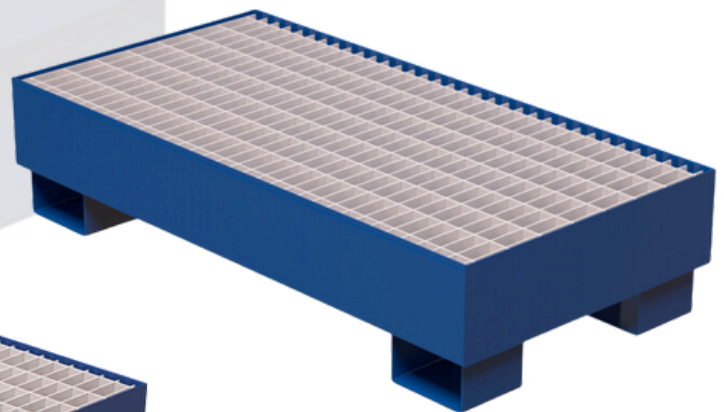


Sump Tray VVRB

- Solid construction reinforced with steel
- Fully welded construction from inside to outside
- Equipped with a wire mesh cover - hot-dip galvanized
- Suitable for standard barrels/drums
- Compatible with pallet or forklift trucks
- Each component is tested for leak-tightness
- Surface treatment: powder coating in RAL colors, alternatively HDG



Name	Weight, kg	Dimensions, mm	Retention Capacity, L	Number of Barrels
VVRB-50	33	620x620x280	59	1
VVRB-100	55	1220x620x280	100	2
VVRB-200	96	1220x1220x280	200	3

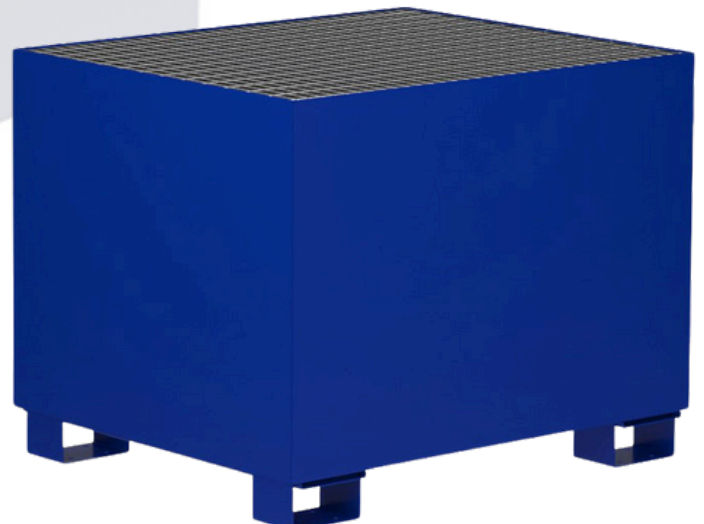
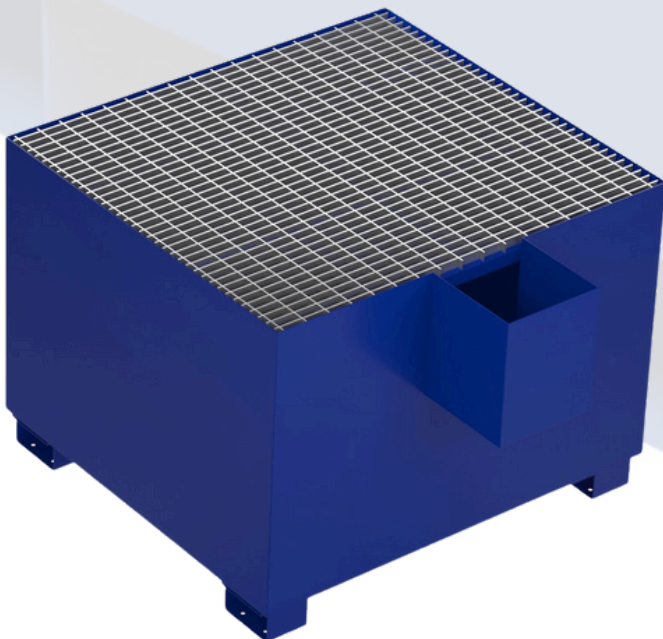


Sump Tray

VVRB EURO

- Solid construction reinforced with steel
- Fully welded construction from inside to outside
- Equipped with a wire mesh cover - hot-dip galvanized
- Suitable for standard barrels/drums
- Compatible with pallet or forklift trucks
- Each component is tested for leak-tightness
- Surface treatment: powder coating in RAL colors, alternatively HDG

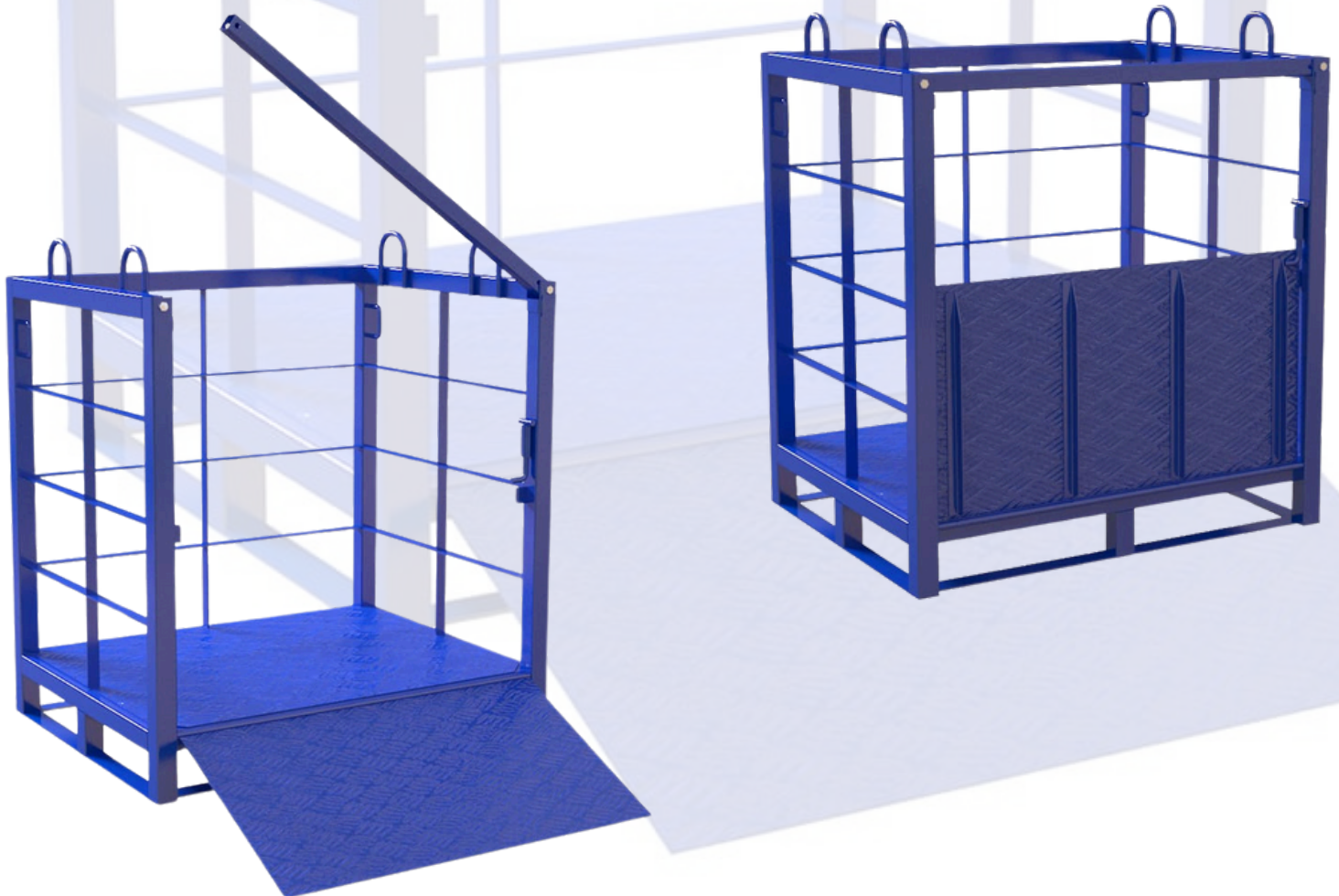
Name	Weight, kg	Dimensions, mm	Retention Capacity, L
VVRB EC	190	1223x1026x966	1000
VVRB EC1	260	1600x1400x1050	1700



Cage for Storage and Transport of Gas Cylinders

- Suitable for storing and transporting 8 and 12 gas cylinders
- For use with cranes and forklifts
- Designed specifically for metalworking companies, service stations, etc.
- Fully welded construction
- Surface treatment: powder coating in RAL colors, alternatively HDG

Name	Weight, kg	Dimensions, mm	Number of Cylinders
VCCS-8	79	1050x580x1195	8
VCCS-12	95	1050x820x1195	12



Gas Cylinder Stand

- Space for 12 cylinders with a capacity of 50 liters
- Durable construction reinforced with steel
- Cylinder mounting in the vertical position using clamp straps
- Surface treatment: powder coating in RAL colors

Name	Weight, kg	Dimensions, mm	Number of Cylinders
VGCB12	224	1095x840x1985	12

