

INDUSTRIAL CONTAINERS FOR FORKLIFTS

Catalog 2024



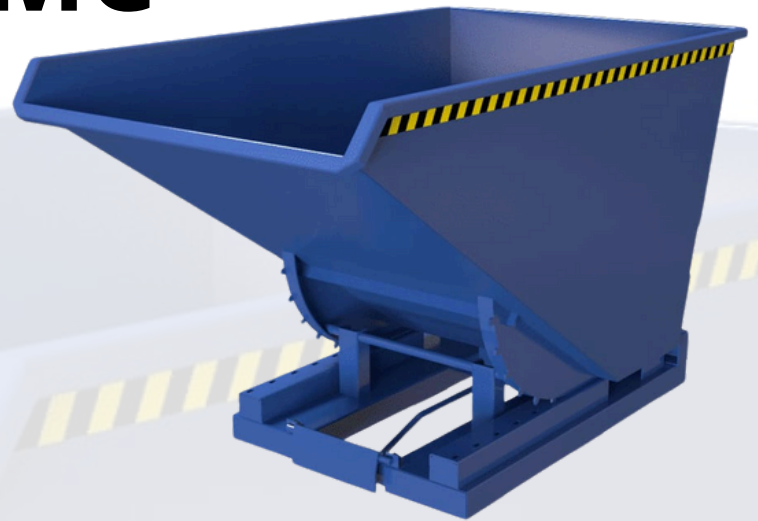
Variantico Group Sp. z o.o.

Swieradowska Str. 47
02-662 Warsaw
Poland

Self-Dumping Container

VAMC

- **Manual and automatic emptying mechanism**
- **Optimal load center of gravity**
- **Solid construction reinforced with steel**
- **Emptying possible using a cable from the driver's seat**
- **Secured with a chain to prevent slipping**
- **Surface treatment: powder coating in RAL colors, alternatively HDG**
- **Optional wheels available on request**



Name	Capacity, L	Weight, kg	Dimensions, mm	Load capacity, kg
VAMC-300	300	99	1260x780x825	1100
VAMC-600	600	136	1580x900x995	1600
VAMC-900	900	169	1580x1210x995	2000
VAMC-1100	1100	176	1730x1320x1160	2000
VAMC-1600	1600	243	2200x1140x1370	2000
VAMC-2500	2500	320	2200x1935x1370	2000
VAMC-900 with lid	900	210	1664x1210x1061	2000
VAMC-1100 with lid	1100	240	1821x1320x1232	2000
VAMC-1600 with lid	1600	306	2307x1140x1439	2000

*Includes a safety kit for installation

Self-Dumping Container

VAMC ECO



- **Manual and automatic emptying mechanism**
- **Optimal center of gravity for the load**
- **Solid construction reinforced with steel**
- **Emptying possible using a cable from the driver's seat**
- **Secured with a chain to prevent slipping**
- **Surface treatment: powder coating in RAL colors, alternatively HDG**
- **Optional wheels available on request**

Name	Capacity, L	Weight, kg	Dimensions, mm	Load capacity, kg
VAMC-300 ECO	300	74	1125x790x770	750
VAMC-600 ECO	600	93	1340x956x926	1100
VAMC-900 ECO	900	122	1460x1210x1012	1100
VAMC-1100 ECO	1100	134	1535x1423x1026	1100
VAMC-1600 ECO	1600	168	2100x1180x1290	1100

*Includes a safety kit for installation

Tipping Container VVUC

- **Front emptying mechanism with a 90° tilt**
- **Durable construction reinforced with steel**
- **Minimum height of 420 mm**
- **Cable release from the driver's seat**
- **Secured with a chain to prevent slipping**
- **Automatically locks when returning to the upright position**
- **Surface treatment: powder coating in RAL colors, alternatively HDG**
- **Optional wheels available on request**



Name	Capacity, L	Weight, kg	Dimensions, mm	Load capacity, kg
VVUC-15	150	61	1210x747x419	1100
VVUC-25	250	69	1210x1047x419	1100
VVUC-30	300	76	1393x780x577	1300
VVUC-50	500	90	1648x812x727	1300
VVUC-75	750	141	1627x1162x727	1500
VVUC-100	1000	169	1707x1282x727	1800
VVUC-125	1250	189	1774x1282x907	1800
VVUC-150	1500	203	1774x1482x907	1800

*Includes a safety kit for installation

Tipping Container

VVUC PLUS

- **Front emptying mechanism with a 90° tilt**
- **Durable construction reinforced with steel**
- **Minimum height of 420 mm**
- **Cable release from the driver's seat**
- **Secured with a chain to prevent slipping**
- **Automatically locks when returning to the upright position**
- **Surface treatment: powder coating in RAL colors, alternatively HDG**
- **Optional wheels available on request**

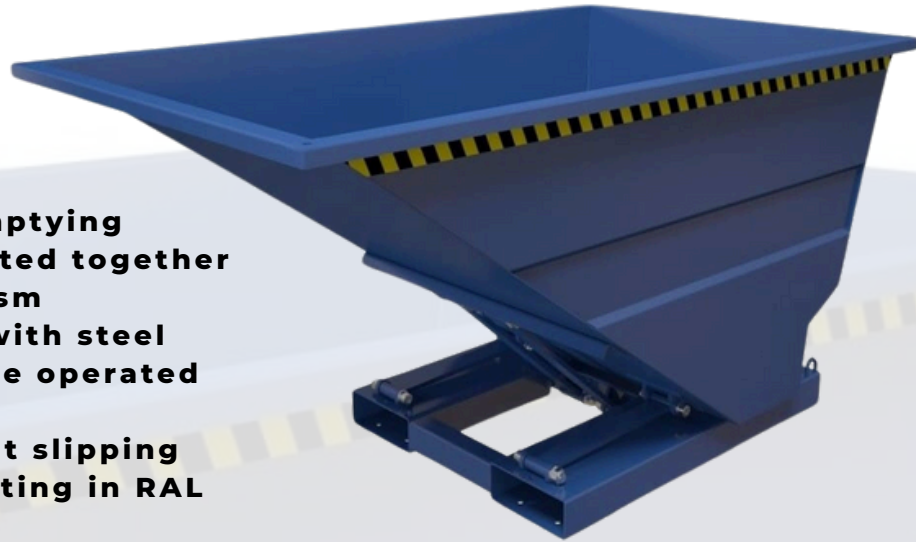


Name	Capacity, L	Weight, kg	Dimensions, mm	Load capacity, kg
VVUC-30+	300	76	1360x780x756	1300
VVUC-50+	500	90	1510x812x905	1300

*Includes a safety kit for installation

Forklift Container VVSC

- **Front tilting mechanism for emptying**
- **Container and base are connected together with a special scissor mechanism**
- **Solid construction reinforced with steel**
- **Emptying possible using a cable operated from the driver's seat**
- **Secured with a chain to prevent slipping**
- **Surface treatment: powder coating in RAL colors, alternatively HDG**
- **Optional wheels available on request**



Name	Capacity, L	Weight, kg	Dimensions, mm	Load capacity, kg
VVSC-50	500	100	1580x973x764	1200
VVSC-75	750	122	1580x1343x764	1200
VVSC-100	1000	148	1580x1722x764	1600

*Includes a safety kit for installation

Forklift Container

VVMC

- **Hand-operated container with a rear trolley**
- **Exceptional maneuverability**
- **Secured with a chain to prevent slipping**
- **Equipped with two fixed wheels and one swivel wheel**
- **Can be transported using a forklift**
- **Surface treatment: powder coating in RAL colors, alternatively HDG**



Name	Capacity, L	Weight, kg	Dimensions, mm	Load capacity, kg
VVMC-25	250	62	1284x880x780	600
VVMC-40	400	75	1444x920x938	600
VVMC-60	600	89	1564x1030x1058	600

*Includes a safety kit for installation

Drop-Bottom Container

VVBB

- **Smooth lower opening with tension springs**
- **Suitable for forklifts and cranes**
- **Solid construction reinforced with steel**
- **Emptying possible using a cable operated from the driver's seat**
- **Secured with a chain to prevent slipping**
- **Four welded hooks for crane transport**
- **Surface treatment: powder coating in RAL colors, alternatively HDG**
- **Available in a reinforced version**
- **Optional wheels available on request**



Name	Capacity, L	Weight, kg	Dimensions, mm	Load capacity, kg
VVBB-50	500	146	1344x940x764	1200
VVBB-75	750	172	1344x940x1034	1200
VVBB-100	1000	198	1344x940x1294	1200
VVBB-130	1300	237	1704x940x1294	1200
VVBB-150	1500	261	1974x940x1294	1200
VVBB-150R	1500	316	1974x940x1294	1500
VVBB-200	2000	324	2574x940x1294	1500
VVBB-200R	2000	393	2574x940x1294	2000

*Includes a safety kit for installation

Drop-Bottom Container

VVBB ECO

- Available with a lid
- Optional wheels available on request



Name	Capacity, L	Weight, kg	Dimensions, mm	Load capacity, kg
VVBB-50 ECO	500	123	1344x940x764	1000
VVBB-75 ECO	750	143	1344x940x1034	1000
VVBB-100 ECO	1000	161	1344x940x1294	1000
VVBB-130 ECO	1300	185	1704x940x1294	1000
VVBB-150 ECO	1500	204	1974x940x1294	1000
VVBB-200 ECO	2000	253	2574x940x1294	1000

*Includes a safety kit for installation

Tilt Bucket for Forklift

VVAL

- **Faster and optimized way to transport materials**
- **Solid steel construction**
- **Equipped with automatic locking teeth in the entry pockets**
- **Automatic lock/unlock mechanism**
- **Four welded hooks for crane transport**
- **Surface treatment: powder coating in RAL colors, alternatively HDG**
- **Optional wheels available on request**



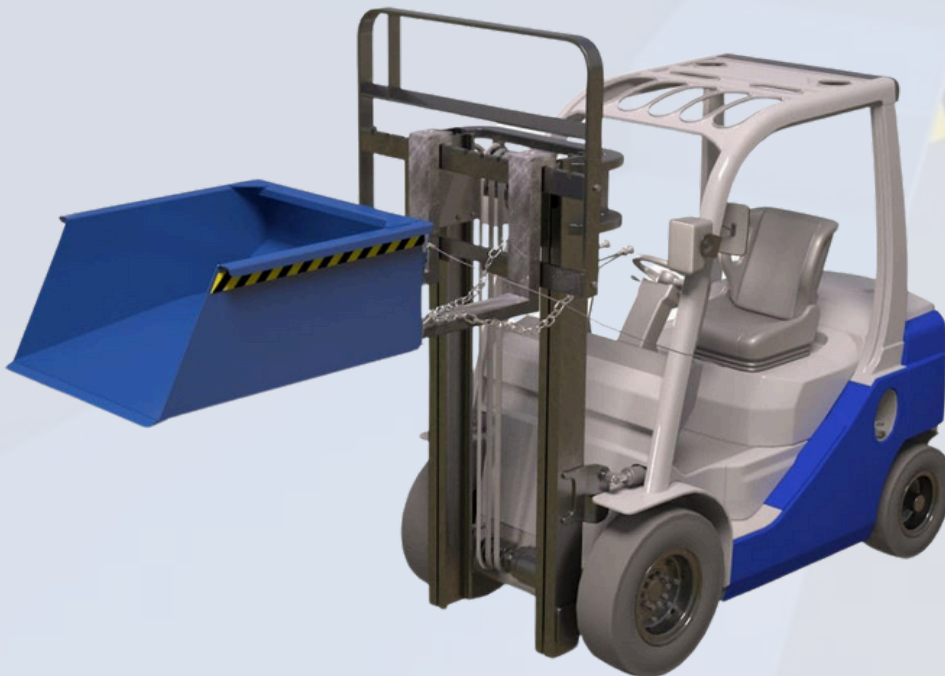
Name	Capacity, L	Weight, kg	Dimensions, mm	Load capacity, kg
VVAL-550	550	330	1668x1186x994	1700
VVAL-1200	1200	400	1840x1776x994	2000

*Includes gas lift

Bulk Material Shovel

VVS

- **Durable construction:** reinforced sides with a thickness of 4 to 5 mm, base thickness of 5 mm
- **Ideal for transporting and moving gravel, sand, chips, granules, or snow**
- **Specifically designed for easy sliding under loose materials**
- **Surface treatment:** powder coating in RAL colors



Name	Capacity, L	Weight, kg	Dimensions, mm	Load capacity, kg
VVS-50	500	190	1455x1130x562	2000
VVS-75	750	212	1455x1390x562	2000
VVS-100	1000	272	1712x1640x562	2000
VVS-150	1500	313	1712x1740x562	2000

*Includes a safety kit for installation

Rotating Container

360 VVTR

- **180-degree rotating mechanism suitable for forklifts**
- **Solid steel construction**
- **Four welded hooks for crane transport**
- **Stackable for space-saving!**
- **Surface treatment: powder coating in RAL colors, alternatively HDG**
- **Optional wheels available on request**

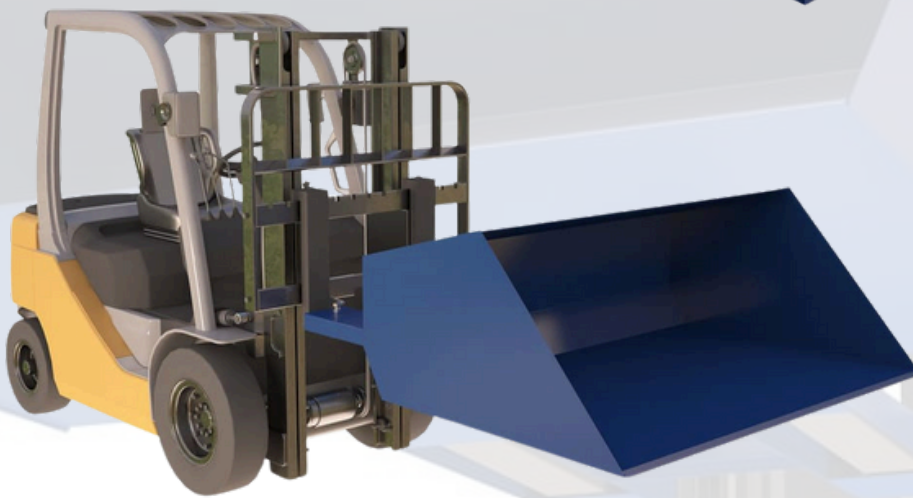
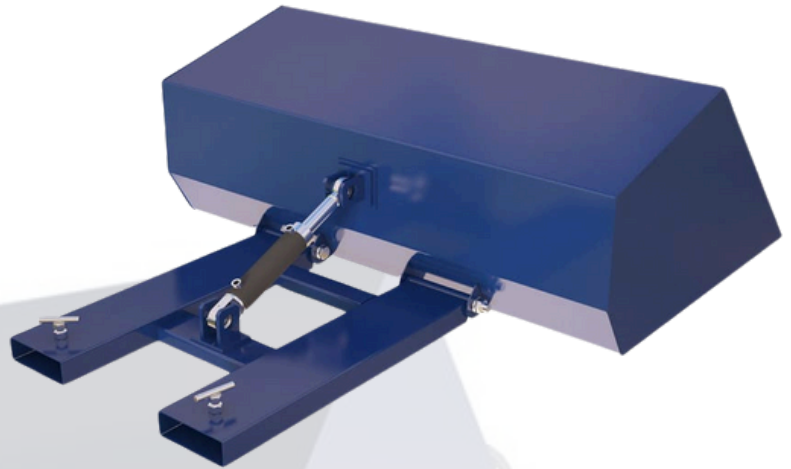


Name	Capacity, L	Weight, kg	Dimensions, mm	Load capacity, kg
VVTR-500	500	113	1202x1002x773	1000
VVTR-750	750	126	1202x1002x983	1000
VVTR-1000	1000	150	1202x1002x1309	1000
VVTR-1500	1500	177	1750x1000x1257	1000
VVTR-2000	2000	211	1893x1100x1324	1000

*Includes a safety kit for installation

Hydraulic Bucket VVSH

- Hydraulic shovel for forklifts is equipped with a hydraulic tilt cylinder
- It only requires an additional hydraulic valve on the forklift for operation
- Compact design with easy filling characteristics and good maneuverability
- Ideal for transporting sand, gravel, and aggregates



Name	Capacity, L	Weight, kg	Dimensions, mm	Load capacity, kg
VVSH-30	300	135	1742x1305x642	1500
VVSH-50	500	180	1857x1500x618	1500
VVSH-75	750	213	2021x1600x718	1500
VVSH-100	1000	250	2180x1808x718	1500
VVSH-150	1500	328	2380x2008x818	1500
VVSH-250	2500	387	2470x2350x1018	1500

*VVSH-150 and VVSH-250 are equipped with 2 hydraulic cylinders

Container VVST

- **Front tipping mechanism with a 90° tilt, full dump**
- **Solid, reinforced steel construction, reinforced container**
- **Emptying possible via a cable operated from the driver's seat**
- **Secured with a chain to prevent slipping**
- **Automatic locking when set to the vertical position**
- **Convenient storage**
- **Surface treatment: powder coating RAL**



Name	Capacity, L	Weight, kg	Dimensions, mm	Load capacity, kg
VVST-30	300	105	1338x763x956	1000
VVST-30 Pojemnik	300	52	855x738x600	1000
VVST-30 Poprzeczka	300	53	913x738x705	1000

*Includes a safety kit for installation

Container for Construction Materials

- **Solid construction reinforced with steel**
- **Stackable for space optimization**
- **Suitable for transport and lifting using a forklift and crane**
- **Fully welded construction**
- **Surface treatment: powder coating RAL, alternatively HDG**



Name	Capacity, L	Weight, kg	Dimensions, mm	Load capacity, kg
VKCC	1200	99	1643x1064x804	1400



- **The container has 4 lifting arms and internal pockets for forklifts**
- **Solid construction reinforced with steel**
- **Designed for use in construction**
- **Compact storage of empty containers in the warehouse and during delivery**
- **Surface treatment: powder coating RAL, alternatively HDG**

Name	Capacity, L	Weight, kg	Dimensions, mm	Load capacity, kg
VKCC	1200	99	1643x1064x804	1400

Silo Container

- **Solid steel reinforced construction**
- **VCB-500 is suitable for use with cranes**
- **VCB-500F is suitable for forklifts**
- **Equipped with a safety mechanism to prevent accidental opening (spring)**
- **Fully welded construction**
- **Surface treatment: powder coating RAL, alternatively HDG**



Name	Capacity, L	Weight, kg	Dimensions, mm
VCB-500F	500	140	1000x960x1200
VCB-500	500	195	1194x1066x2352